
 WARNING	
	Safety: Always lock out power source and follow recommended safety procedures.

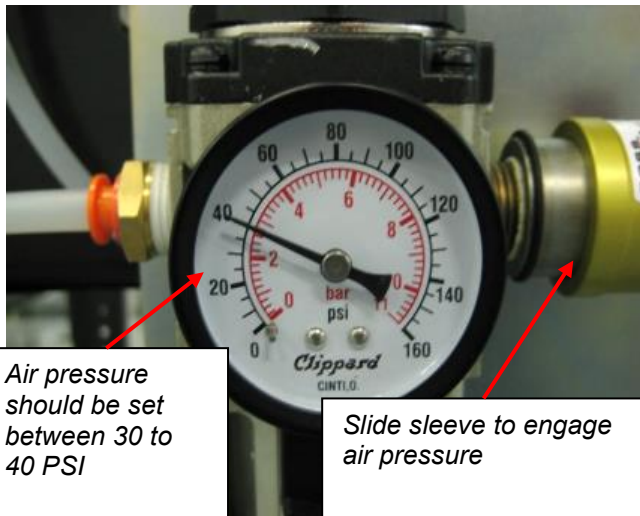
NBC THREADING THE BELT

THREADING BELT IN NBC ACCUMULATION CONVEYOR

Step 1

The most important item in threading NBC belts is to **turn the system air ON with NO POWER to the logic modules**. This will depress the pressure pans and open up a belt path. Without air, all the rollers are engaged as NBC is a spring-to-drive system and it will be extremely difficult to thread the belt.

NOTE – Use the slide switch located at the take-up cylinder base to turn the air take-up OFF.



Air pressure should be set between 30 to 40 PSI

Slide sleeve to engage air pressure

Primary Conveyor Regulator P/N E0034790

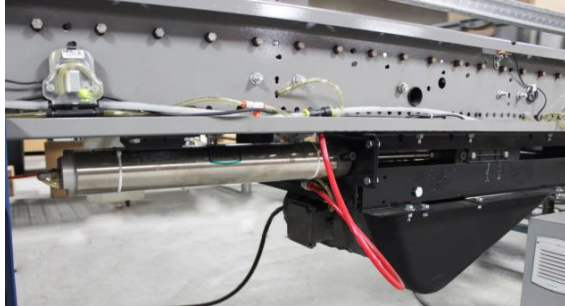
Step 2

Disconnect the power to ALL the logic modules (switch off SICK conveyor mounted power supplies). All logic modules lights should be OFF. This will depress the springs in the pressure pan creating a belt path.



Step 3

Remove bottom guard on drive to have access for belt threading (150-AT manual drive guard shown – the 500 lb.-AT bottom guard is a flat plate).



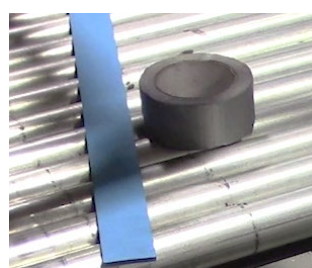
Step 4

Uncoil the new belt. With the air pressure **ON** the logic, and the logic module power **OFF**, attach a sheet metal splint or the belt threading tool (attached to each drive from factory P/N 1118104) with tape to the end of the belt. This will enhance the ability to thread the belt under the rollers without the ends curling.



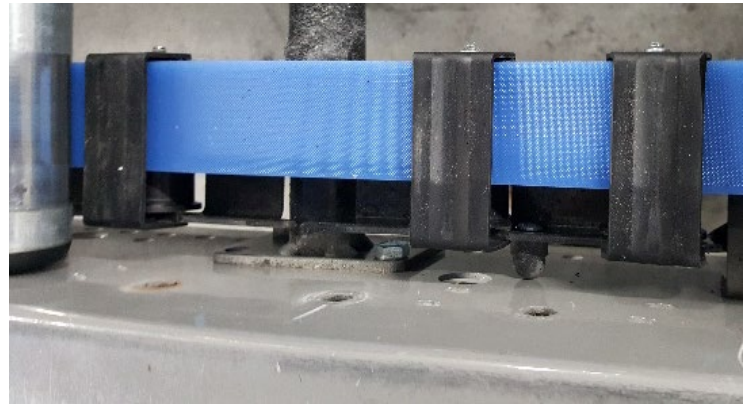
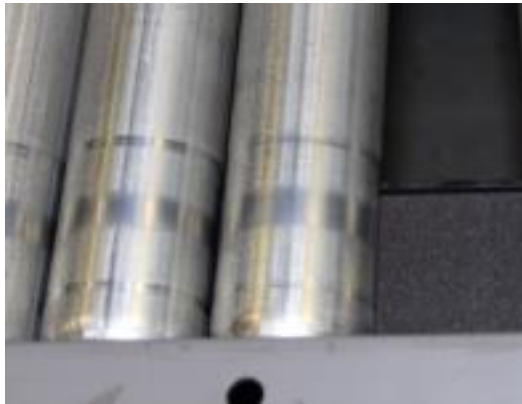
NOTE:

Keep tape smooth and do not apply too much tape, as it will make it difficult to push the belt through the guide rollers.



Step 5

Remove rollers at each end and insert the splint with belt attached. Push belt into conveyor. It will be necessary to remove sections of rollers every 30' or 40' to help pull / push the belt through.



Step 6

Remove bottom guard for end pulley.

Push belt down between the stationary spacer and 6" dia. end pulley, and up and over the 6" flanged snubber pulley.

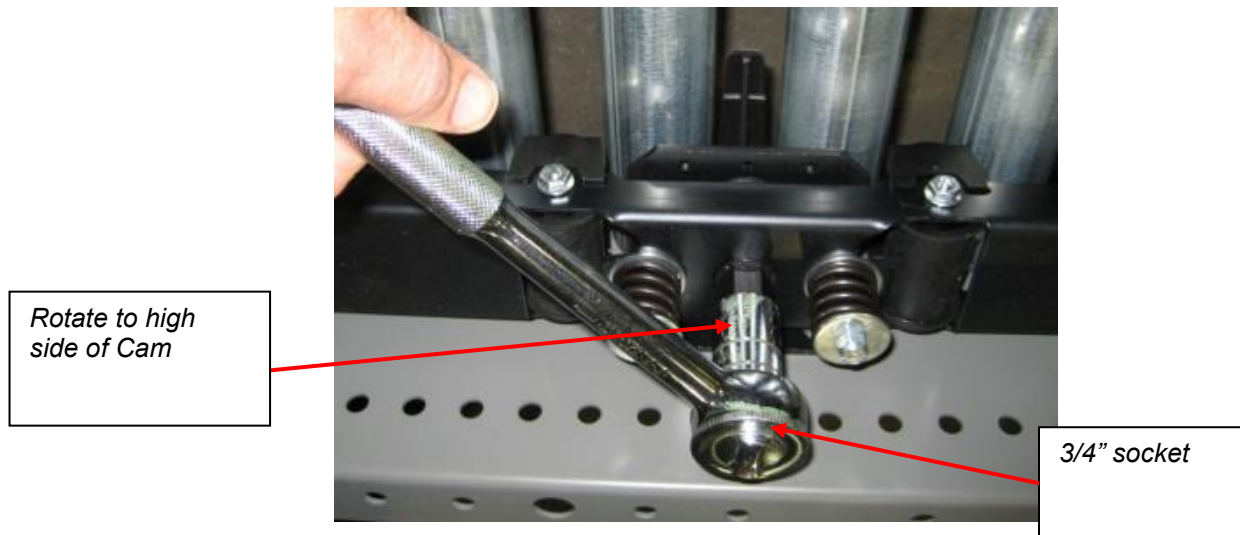
Make sure belt passes between ball bearing belt guides and end pulley.



THREADING BELT IN NBC TRANSPORTATION CONVEYOR

Step 1

NBC transportation conveyor is spring to drive with no air. To open a belt path, two Cams under each pressure pan must be rotated to the high side of the Cam.

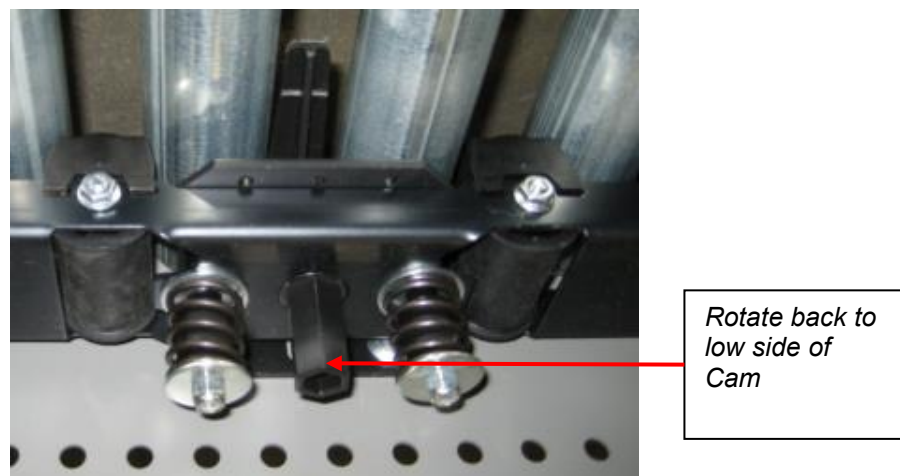


Step 2

Thread the belt as shown in steps 3 through 8 of the NBC accumulation conveyor.

Step 3

Rotate each Cam back to the low side of the Cam re-engaging the spring.



For more NBC applications MHS recommends the following IOM's at <https://www.mhs-conveyor.com/technologies/belt-driven-roller-conveyor/nbc-manual>

MHS Conveyor Also recommends NBC maintenance videos for tracking the NBC belt and NBC belt alignment at <https://mhs-conveyor.com/media-center/maintenance-videos/82-belt-driven-live-roller>

GENERAL INFORMATION

Website Link:

mhs-conveyor.com

MHS Conveyor INFORMATION

Mission

MHS Conveyor, located in Norton Shores, Michigan, is a leading deliverer of “smart” material handling systems, technologies, products, and services, creating solutions for material flow applications. As a global supplier of conveyor systems and equipment since 1964, MHS Conveyor provides sorters, conveyors, and accessories to satisfy a broad spectrum of accumulation, transportation, and sortation applications.



MHS Conveyor
1300 E. Mount Garfield Road Norton Shores, MI
49441-6097 USA 231.798.4547

Email: us-info@mhs-conveyor.com

Web Site : MHS-Conveyor.com



Regional sales offices and authorized Business Partners located throughout the United States and Canada. Licensees and Business Partners in Europe, South America, and Southeast Asia.